



PCM Moineau

17 rue Ernest Laval - BP 35 - 92173 Vanves Cedex France
Tel (33) 01 41 08 15 15 - Telex 634 129 F - Fax (33) 01 41 08 15 00
Internet: pcmpompes.com Email: pcm@pcmpompes.com

Progressive Cavity Pumps with Force Feed Screw IVA range

Fields of application

This range of pumps are used in all branches of Industry :

Building,
Ceramics,
Chemical,
Edible oil industry,

Mining,
Oil,
Paper industry,
Petrochemical,
Sewage treatment,
Soap factories,

Starch factories,
Sugar refineries.



Benefits

Non-pulsating flow,
Flow directly proportional to speed,
High self-priming capability,
High efficiency,
Operates without valves,

Simple and heavy duty construction,
Easy maintenance.

IVA range

Specially designed to handle heterogeneous and highly viscous products (up to 1 000 000 cPo), the MOINEAU IVA pumps are equipped with

one or two force feed screws and a wide throat inlet.

Performances

Capacity

Up to 300 m³/h.

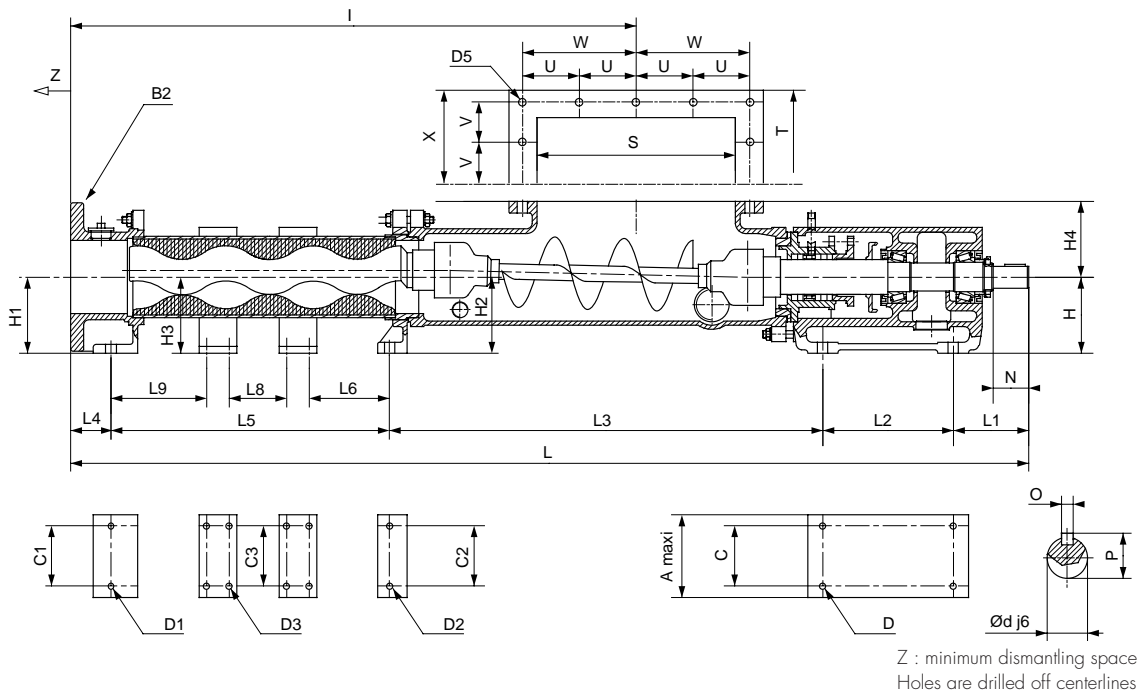
Discharge pressure

Up to 45 bar in standard version and up to 200 bar on request.

Temperature

From 0 °C to + 110 °C
higher temperature on request.





Design features

Body

The pump body is of A48 N°40 cast-iron or AISI 316L stainless steel construction. Special material available on request.

Inspection port, double casing for heating or cooling are also available.

Rotor

Depending on the product to be pumped, the rotor can be made of hardened steel, AISI 316L stainless steel, with or without chrome plating. Other material are available.

Stator

Stators are moulded to metal casings and can be made of nitrile, ethylene propylene, hypalon, viton, neoprene or natural rubber of various shore hardness. Cast iron and tufnol stators are also available.

Rotating parts

According to rotor material and pumped product, rotating parts can be made of metallized steel, AISI 316 stainless steel, AISI 420 stainless steel, with or without chrome plating. Other material are available.

Bearings

The bearing housing is made of cast iron.

The shaft is supported by two high capacity bearings, greased for life.

Shaft seals

A comprehensive range of packed gland, single or double mechanical seal is available to suit all duty conditions.

Drives

Electric motor, diesel/petrol engine, hydraulic motor, geared motor, variable speed geared motor, frequency inverter, d.c motor are available.

Options

Circulating by-pass, dry running protection device, relief valve, capacity and pressure control device and many other accessories are available.